



GIG
CYMRU
NHS
WALES

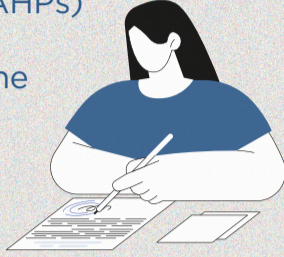
Addysg a Gwella Iechyd
Cymru (AaGIC)
Health Education and
Improvement Wales (HEIW)

NHS Wales Bursary

Your guide to understanding the bursary

HOW DOES IT WORK?

Student nurses, healthcare science professionals, midwives and allied healthcare professionals (AHPs) who commit to working in Wales for up to two years after qualifying are eligible to apply for the bursary. This provides non-repayable support covering tuition fees.



WHAT IS THE COMMITMENT?

If you chose to access funding via the scheme, you commit to working within Wales for a period of eighteen months - two years depending on the course you choose.

WHAT IS THE PROCESS?

- 1 Decide on your healthcare university course
- 2 Receive an offer of a place from your university
- 3 Apply to be assessed for the bursary as soon as you receive your offer
- 4 Receive your bursary award
- 5 Apply for student finance if eligible
- 6 Successfully complete your university course
- 7 Secure your job offer in your chosen profession and start your career in Wales



WHY NHS WALES?

NHS Wales are the largest employer in Wales - employing over 90,000 people. We have over 350 different career opportunities encompassing a huge variety of clinical and non-clinical roles.

NHS Wales invests in their staff to enable them to develop in their chosen role or career. We offer structured development routes along with opportunities for progression and personal development.



WHAT CAN I EXPECT?

In return for up to two years full time commitment to work in Wales, you could receive:

Amount £	Terms
1,000	Per academic year (£3,000 in total)
9,000	Tuition fees per academic year (£27,000 in total) upon assessment
2,643/2,207	Means Tested Maintenance Grant for living expenses up to £2,643 or up to £2,207 if living in parental home

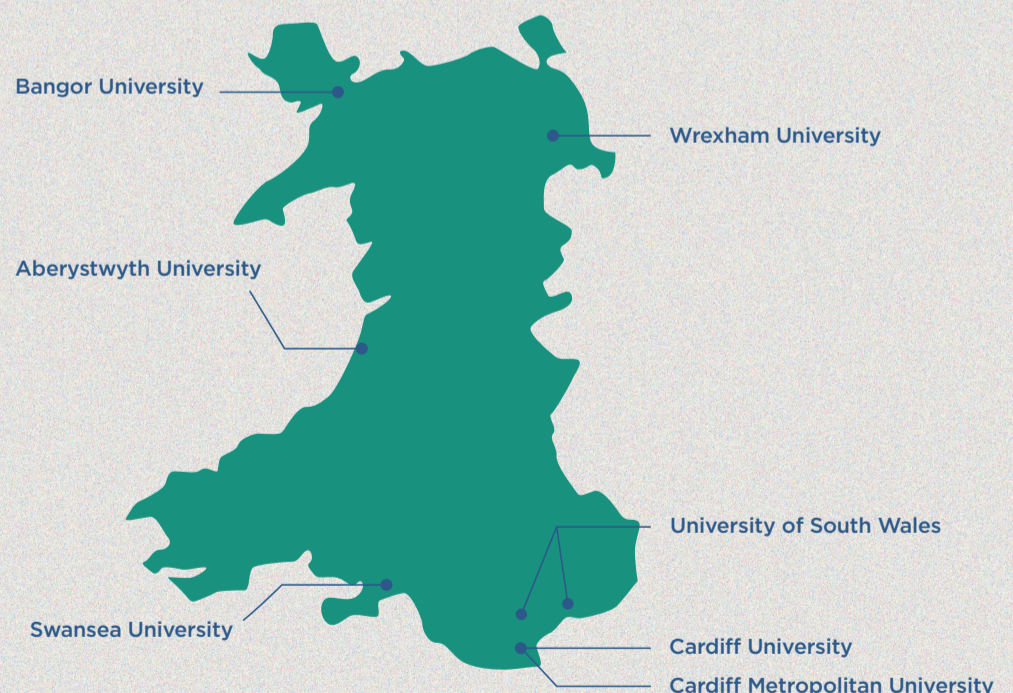
Means tested support is also available based on individual financial circumstances for example child care or disability.

Living arrangements	Current reduced rate of maintenance loan £	Maximum amount of maintenance loan available £ for 2024/25 academic year ¹	Difference (+)
Parental home	4,475	9,315	4,840
Elsewhere	5,360	11,150	5,790

¹ Current figures illustrated show the maximum maintenance loans based on current rates in 2023/24, these will be updated in the future.

WHERE CAN I STUDY?

Wales has seven universities offering a range of healthcare degrees. To find a university that relates to your chosen course a list is available below.



MORE INFORMATION?

It is important to fully understand your commitment before taking the bursary. To find out more, please visit: heiw.nhs.wales/nhs-bursary or nwssp.nhs.wales/ourservices/student-awards-services You can also email us at heiw.bursary@wales.nhs.uk